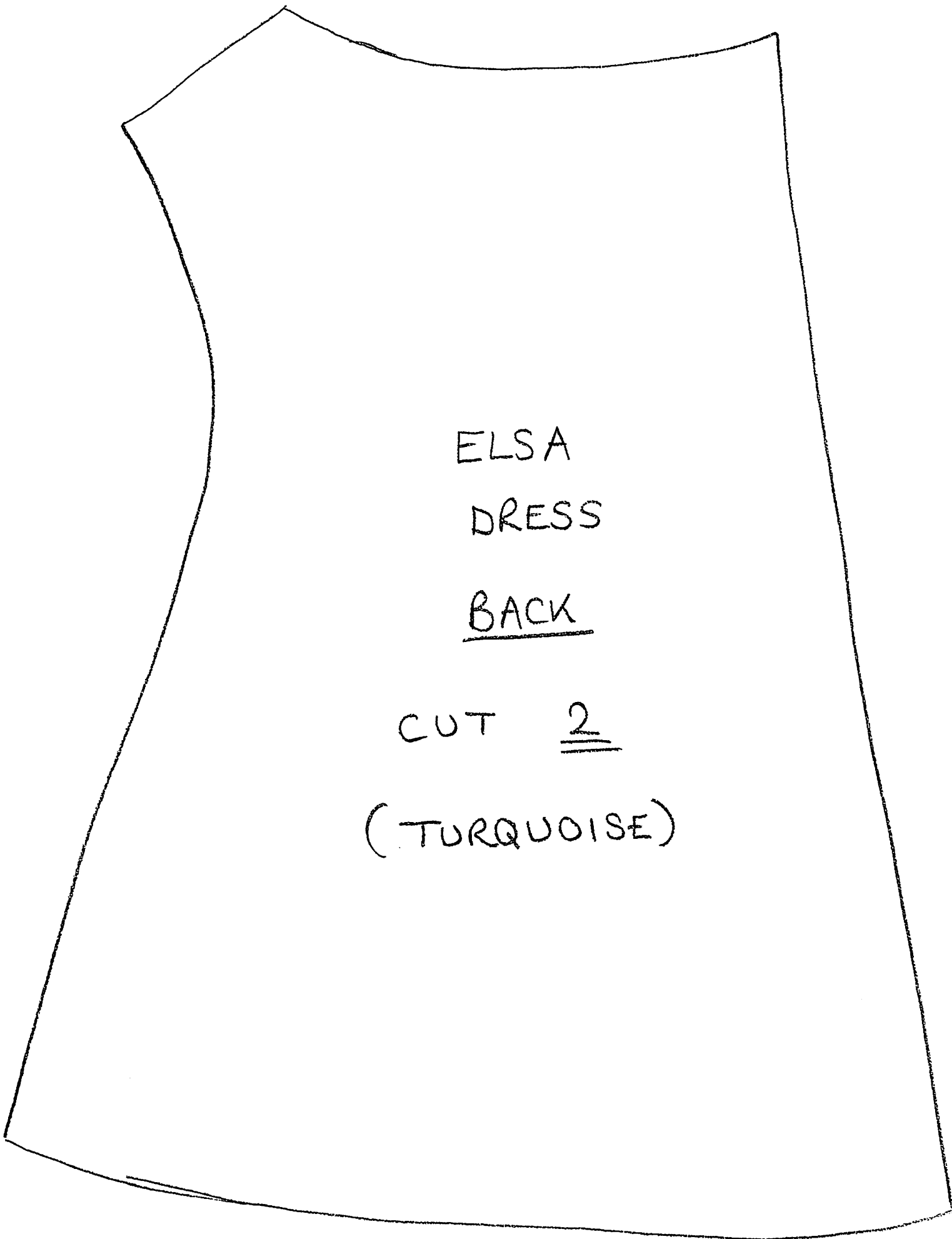


ELSA - DRESS



ELSA

DRESS

BACK

CUT 2

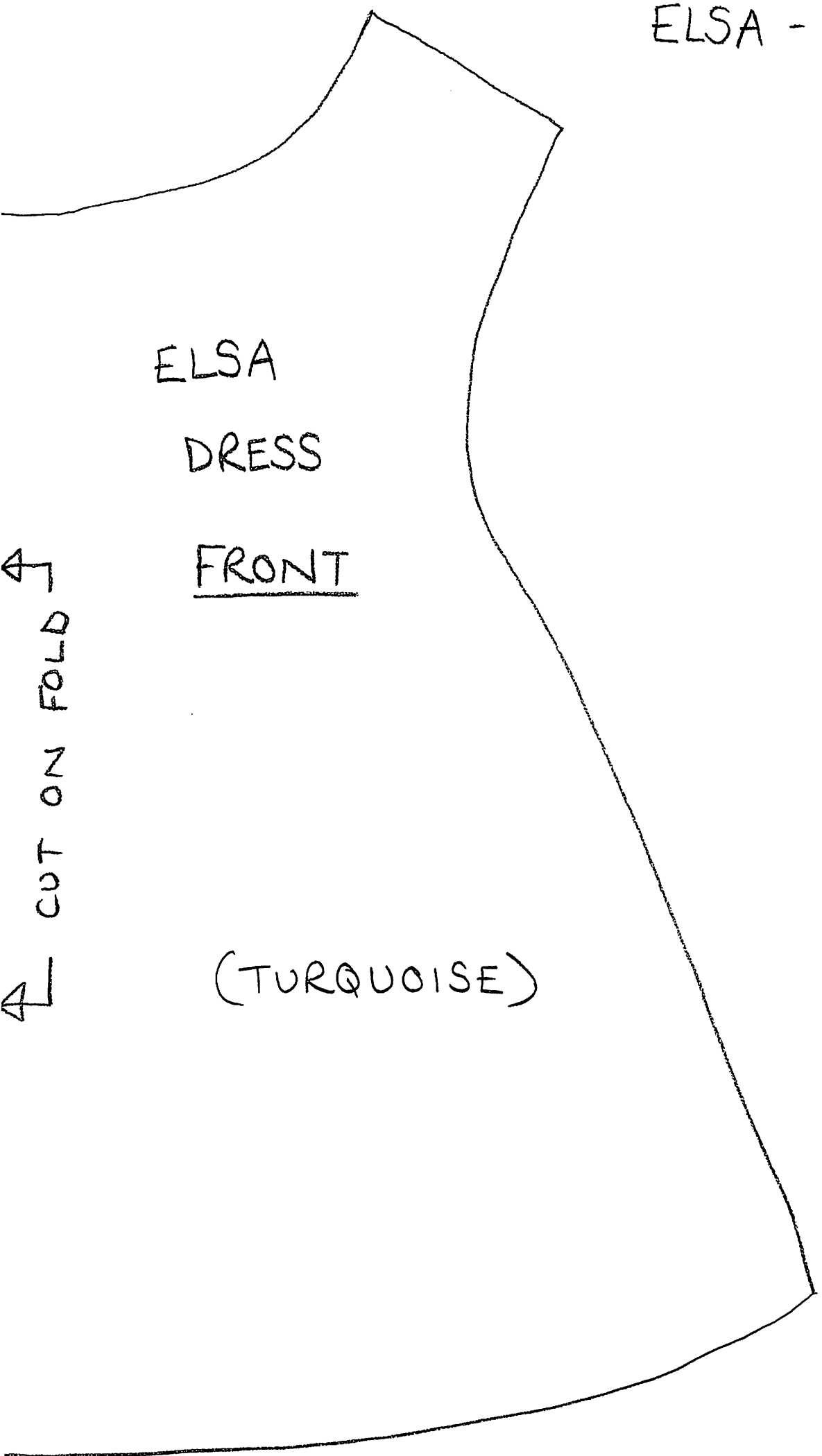
(TURQUOISE)

ELSA - DRESS

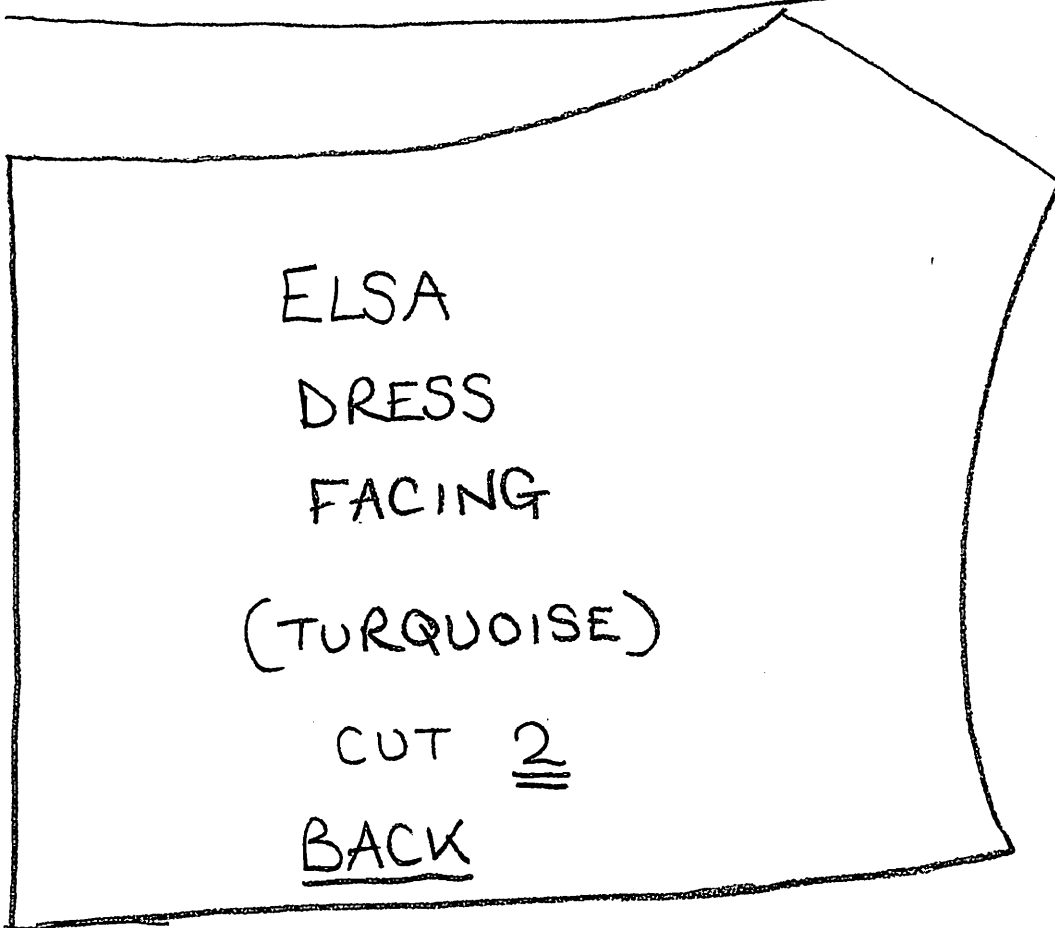
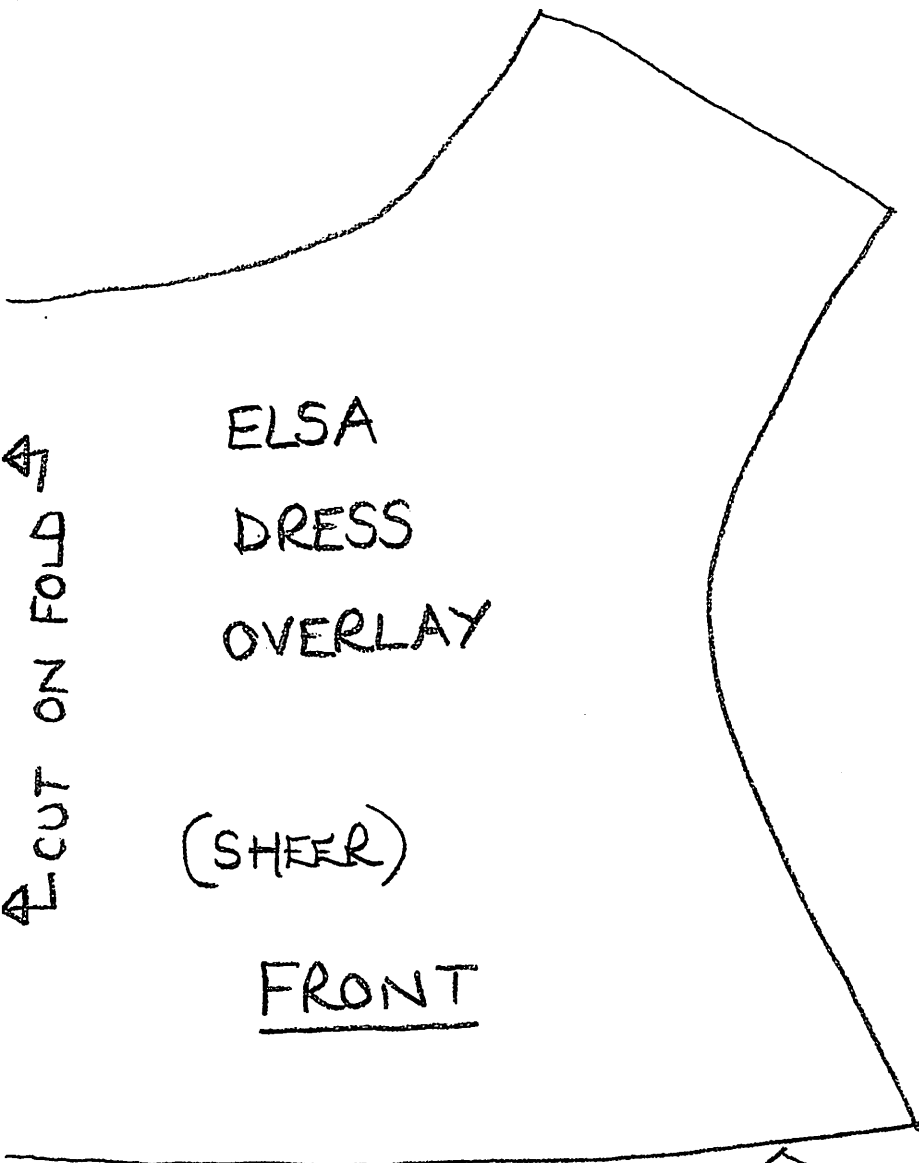
ELSA
DRESS
FRONT

←
CUT ON FOLD
←

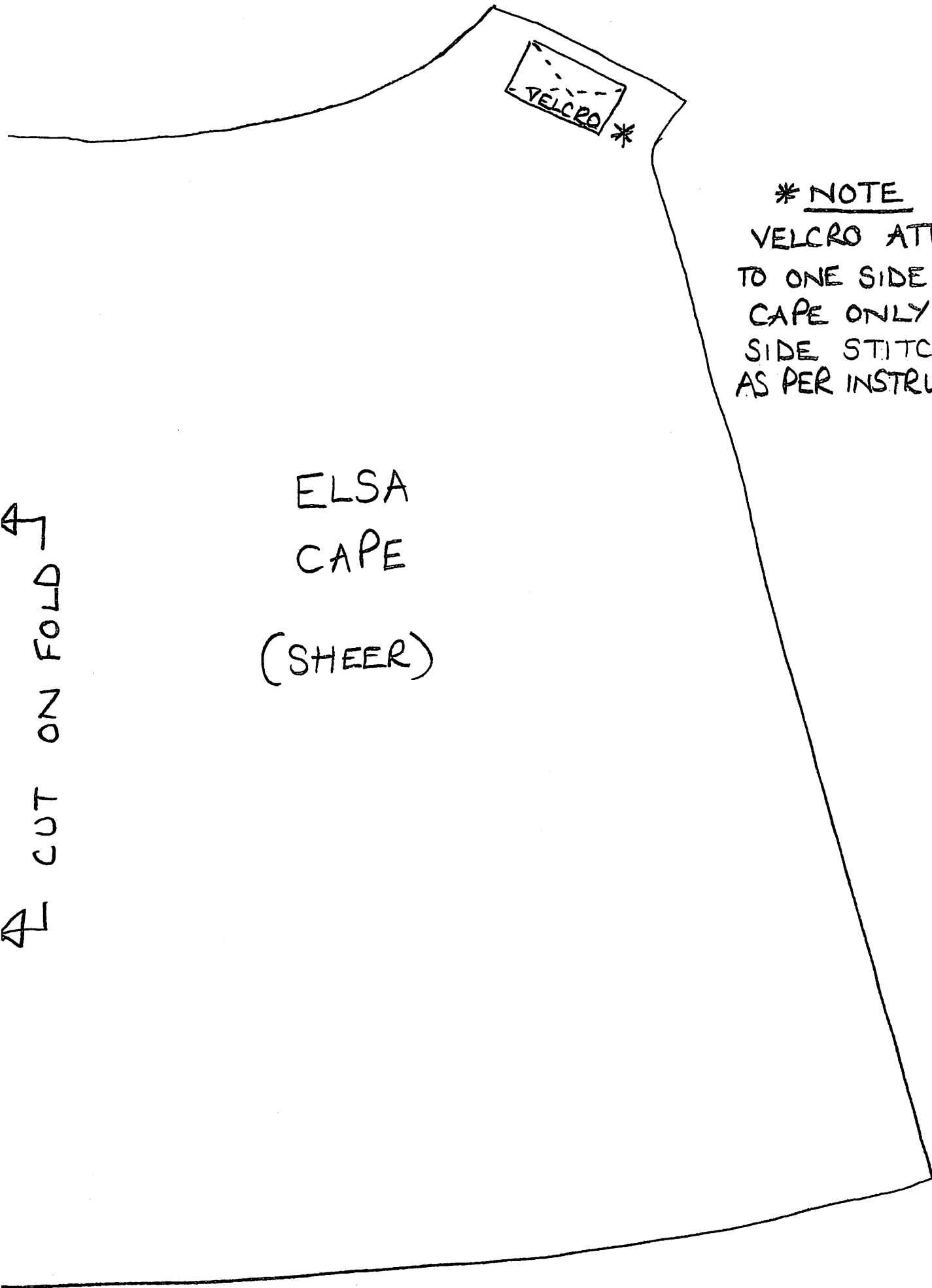
(TURQUOISE)



ELSA - DRESS



ELSA - CAPE



* NOTE
VELCRO ATTACHED
TO ONE SIDE OF
CAPE ONLY. OTHER
SIDE STITCHED
AS PER INSTRUCTIONS

ELSA
CAPE
(SHEER)

CUT ON FOLD